

# Innovative Mechanisms and Practical Paths of Integrating Regional Culture into Modern Architectural Designs

Zhiliang Xiao

Anhui Province Jingtu Design Group Co., Ltd., Hefei, Anhui, 230000, China

**Keywords:** Regional Culture; Modern Architectural Design; Innovation Mechanisms; Practical Pathways; Cultural Inheritance.

**Abstract:** In the context of globalization, modern architectural design has increasingly converged in function, form, and technology, while regional characteristics have gradually weakened. This trend has resulted in a lack of distinct cultural expression in architectural works. As a vital vehicle for historical memory and social identity, regional culture presents a shared challenge for both academic and professional circles: how to effectively preserve and innovate it within contemporary architectural design. This paper systematically explores innovative mechanisms and practical pathways for integrating regional culture into modern architectural design, focusing on contemporary expressions of regional culture. The research first examines the interactive relationship between regional culture and modern architecture, analyzing the tensions and potential for integration between the two. It then proposes three innovative mechanisms: the mechanism for recreating symbols and artistic conception, the mechanism for inheriting and innovating materials and craftsmanship, and the mechanism for multi-stakeholder collaboration, elucidating their inherent logic in design practice. Finally, drawing on typical scenarios such as urban public buildings, residential architecture, and landscape spaces, it summarizes the practical pathways and application strategies for regional culture across different building types. The research demonstrates that integrating regional culture not only enriches the cultural depth and artistic value of architectural works but also enhances public cultural identity and sense of belonging, providing theoretical foundations and practical experience for the sustainable development of modern architecture. This exploration aims to offer guidance to architects and practitioners, advancing the creative transformation and innovative development of regional culture within contemporary architectural design.

## 1. Introduction

Amid accelerating globalization and modernization, architectural design faces dual challenges of formal homogenization and weakened cultural substance<sup>[1]</sup>. While pursuing technological advancement and functional efficiency, numerous modern buildings often neglect responses to and expressions of regional culture, resulting in architectural spaces lacking distinctiveness and identity<sup>[2]</sup>. As vital components of historical accumulation and social memory, regional cultures not only embody specific natural environments and social lifestyles but also reflect people's values and aesthetic orientations<sup>[3]</sup>. How to effectively integrate regional culture into modern architectural design—ensuring it aligns with contemporary aesthetics and technical logic while highlighting regional characteristics and cultural depth—has become a critical issue demanding urgent consideration within the architectural community<sup>[4]</sup>. Scholars and design practitioners worldwide have actively sought to incorporate regional cultural elements into architecture, exploring pathways for dialogue between tradition and modernity through symbolic expression, material innovation, and spatial creation<sup>[5]</sup>. These explorations remain unsystematized at the methodological level, while practical implementations often suffer from limited diversity and insufficient depth<sup>[6]</sup>. It is necessary to further clarify the relationship between regional culture and modern architecture, establish corresponding innovation mechanisms, and propose actionable practical pathways<sup>[7]</sup>. This paper aims

to achieve these research objectives by examining contemporary expressions of regional culture in modern architectural design, seeking to provide new insights and references for architectural theory and practice<sup>[8]</sup>.

## 2. The Relationship Between Regional Culture and Modern Architectural Design

Regional culture represents the comprehensive cultural manifestations gradually formed and accumulated over a region's long historical development<sup>[9]</sup>. It encompasses influences from natural environments and climatic conditions, as well as elements such as social systems, folk customs, and aesthetic concepts<sup>[10]</sup>. In architecture, regional culture is often manifested through building forms, material selection, spatial layouts, and decorative details. It not only imbues architecture with unique aesthetic connotations and cultural symbols but also subtly shapes people's lifestyles and social identities. For architectural design, regional culture serves as a vital source for cultural inheritance and innovation. Innovation as a function of culture and architecture

$$I = f(C_{\text{culture}}, A_{\text{rchitecture}}) \quad (1)$$

Since industrialization, modern architectural design has increasingly followed a globalized trajectory, emphasizing functional rationality, technical efficiency, and formal simplicity. While this development propelled architecture's modern transformation, it also led to the phenomenon of “cities with identical faces,” where building forms became homogenized and devoid of regional character. Against this backdrop, relying solely on modernism's universal design principles struggles to address the cultural psychology and regional identity needs of specific social groups. Therefore, modern architecture must re-examine the value of regional culture, treating it as a vital resource for enhancing architectural distinctiveness and cultural depth.

The relationship between regional culture and modern architectural design is not one of simple opposition or separation, but rather a dynamic process of interaction and integration. Modern architecture requires regional culture to strengthen the spiritual essence of space, while regional culture itself needs the medium of modern architecture for its continuation and renewal. Tension exists between them—such as the contradictions between tradition and modernity, locality and globalization—yet complementarity also prevails. Modern architecture provides technical and formal possibilities for the reproduction of regional culture, while regional culture infuses modern architecture with soul and symbolic meaning.

In contemporary design practice, the integration of regional culture and modern architecture is evolving in multidimensional ways. On one hand, designers transform traditional cultural symbols into architectural elements aligned with modern aesthetics through symbolic techniques, evocative spatial design, and innovative use of local materials. As public demand for cultural identity grows, buildings are endowed with greater social and cultural functions, becoming vital conduits for disseminating regional culture. This interaction not only imbues modern architecture with unique character but also enables regional culture to persist and innovate within new social contexts. Cultural integration index (weighted sum)

$$CI = \sum_{i=1}^n w_i \cdot x_i, \quad \sum_{i=1}^n w_i = 1 \quad (2)$$

## 3. Innovative Mechanisms for Integrating Regional Culture into Architectural Design

The effective incorporation of regional culture into modern architectural design requires both the creative transformation of traditional cultural elements and the establishment of systematic mechanisms in design methodologies and implementation pathways. Simple symbolic collage or

superficial imitation often fails to truly reflect the deeper values of regional culture. This paper explores three aspects: the recreation of architectural symbols and spatial ambience, the inheritance and innovation of materials and craftsmanship, and the collaborative participation of diverse stakeholders. These mechanisms address the dual demands of architectural artistic expression and technological advancement while providing viable pathways for the continuity and innovation of regional culture within contemporary social contexts.

#### 4. Mechanism for Recreating Symbols and Ambience

As a material carrier of culture, architecture often embodies rich cultural symbols and spiritual ambience through its form, color, ornamentation, and spatial layout. Symbolic elements accumulated within regional cultures—such as traditional roof curves, window and door lattices, and decorative patterns—serve as both condensed expressions of local history and culture, and symbols of architectural aesthetics and lifestyle. In modern architectural design, discerning and refining these symbols can imbue them with contemporary significance within new contexts, enabling architectural works to possess a modern sensibility while carrying unique cultural connotations. Innovation efficiency ratio

$$E = \frac{O_{\text{cultural}} + O_{\text{functional}}}{I_{\text{resources}}} \quad (3)$$

Regional symbols cannot be mechanically replicated or duplicated, as this risks superficiality and ornamentation, ultimately hollowing out their cultural significance. Designers must employ “recreation”—abstracting, geometrizing, or contextualizing traditional symbols—to align them with modern architecture's functional logic and aesthetic orientation. This re-creation does not negate tradition but rather organically integrates historical memory with contemporary design language through innovative translation, achieving a modern expression of cultural symbols ,showed in Figure1 :

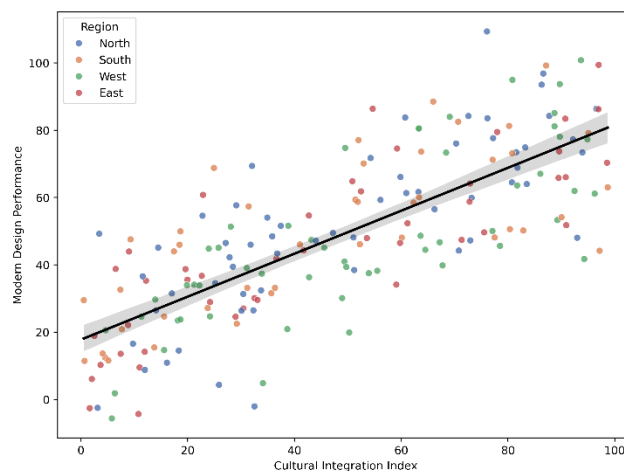


Figure 1 Cultural Index vs Modern Design Score

In crafting spatial ambience, the perspectives on nature, life, and aesthetic pursuits embodied in regional culture often resonate more deeply than literal symbols. Traditional Chinese gardens emphasize the experience of “changing views with each step,” while Japanese architecture values the “ma”—the art of negative space. These spatial philosophies are crystallizations of regional culture and vital sources for creating artistic ambience. When modern architecture integrates such cultural concepts into spatial organization and environmental design, it transcends mere formal replication to achieve spiritual resonance.

The reimagining of symbols and artistic ambience represents not only innovation in design methodology but also a renewal in cultural transmission. It demands that designers approach regional cultures with both reverence and respect, while also daring to break boundaries and reconstruct. In this process, architecture becomes a medium for cultural reproduction, enabling traditional culture to transcend mere historical memory and instead revitalize itself with new vitality within modern society. This mechanism not only endows architecture with unique cultural distinctiveness but also strengthens people's emotional identification and sense of belonging.

## 5. Mechanisms for Inheriting and Innovating Materials and Craftsmanship

The embodiment of regional culture in architectural design relies not only on the expression of symbols and artistic conception but is also deeply rooted in the selection and application of materials and craftsmanship. Traditional building materials such as timber, blue bricks, rammed earth, and stone often carry the characteristics of the local natural environment and construction wisdom, while also reflecting regional lifestyles and aesthetic concepts. In contemporary architectural design, these materials and techniques transcend mere physical components to become symbols of cultural memory. Through thoughtful adaptation, they can evoke a building's unique character and cultural significance. Sustainability model with culture, environment, and technology

$$S = \alpha C + \beta E + \gamma T, \quad \alpha + \beta + \gamma = 1 \quad (4)$$

Simply replicating traditional materials and techniques in their original form often fails to meet modern standards for structural safety, energy efficiency, environmental sustainability, and functional requirements. Designers must innovate while preserving heritage. Integrating traditional timber framing techniques with modern steel structural systems preserves wood's warm texture while enhancing overall durability and seismic resistance. Combining rammed earth craftsmanship with contemporary waterproofing and crack-resistant technologies creates innovative wall systems that blend ecological benefits with cultural resonance. Such innovations preserve regional construction symbols while making buildings more compatible with modern living needs.

Material selection should also emphasize contemporary expressions of local resources. With the rise of green building and sustainable development concepts, the low-carbon characteristics and cultural attributes of local materials have garnered increasing attention. Modern techniques for processing and refining local stone, bamboo, and ceramic tiles not only reduce construction energy consumption and transportation costs but also allow regional culture to be tangibly and visually expressed through architecture. In public buildings, using refined ceramic tiles as curtain wall elements both continues the local historical context and creates an appearance that aligns with contemporary aesthetics.

The inheritance and innovation of materials and techniques represent not merely a technical strategy but a cultural rebirth. By integrating traditional craftsmanship with modern technology, architects can reconstruct the material expression of regional culture within contemporary design contexts, endowing it with new artistic value and social significance. This mechanism not only enhances a building's cultural distinctiveness and sense of local belonging but also propels the living transmission and sustainable development of regional culture within a globalized landscape. Balance between tradition and modernity

$$Q = \lambda T + (1 - \lambda)M, \quad 0 \leq \lambda \leq 1 \quad (5)$$

## 6. Multi-Stakeholder Collaboration Mechanism

The integration of regional culture relies not solely on individual designers' creativity but constitutes a systemic endeavor requiring collaborative participation from multiple stakeholders. As a synthesis of social culture and spatial environment, architectural design involves government policy direction, professional practice by designers, market-driven initiatives by enterprises, and cultural demands from the public. Only through the synergistic efforts of diverse actors can regional culture achieve genuine and effective inheritance and innovation within modern architectural design.

Government guidance at the institutional and policy levels is crucial. Through establishing planning regulations, implementing cultural heritage protection policies, and demonstrating leadership in public projects, governments can foster a favorable external environment for regional cultural preservation. Introducing regional cultural guidelines into urban renewal projects provides designers with a reference framework, thereby preventing excessive commercialization and cultural distortion in architectural design.

Designers serve as the core force in the creative transformation of regional culture. They must not only deeply understand the historical significance and symbolic meaning of regional culture but also possess interdisciplinary design thinking to reconstruct cultural expression within the context of modern technology and contemporary aesthetics. The professional competence and cultural sensitivity of designers determine whether regional culture can be innovatively integrated into architecture, ensuring it meets functional requirements while possessing unique cultural charm ,showed in Figure2:

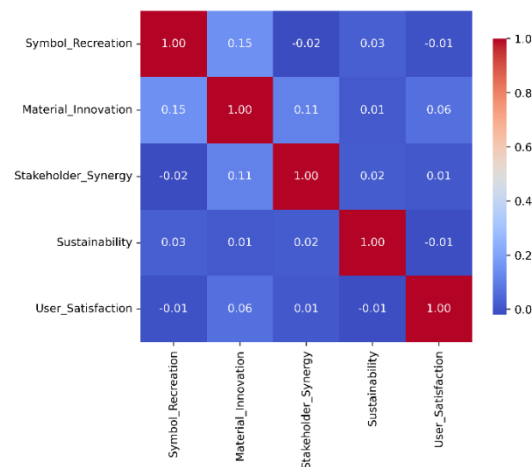


Figure2: Heatmap of Innovation Mechanism Correlation

Public participation and market mechanisms are equally indispensable. Residents' cultural identity and user experience directly influence the social benefits of regional cultural expression in architectural design. Enterprises and markets, through capital investment and product promotion, drive the value transformation and widespread dissemination of regional culture. When governments, designers, the public, and markets form a collaborative mechanism, regional culture can transition from “passive inheritance” to “active innovation” in architectural design, thereby creating a virtuous cycle of sustainable development.

## 7. Practical Pathways and Case Studies

The integration of regional culture into modern architecture manifests both in macro-level planning and design philosophies, as well as in the concrete construction of diverse building types. Public buildings, residential structures, and landscapes/public spaces—as vital venues for daily life

and social interaction—serve as primary stages for regional cultural expression. Explorations and practices within these building types vividly demonstrate the creative transformation and innovative development of regional culture within contemporary contexts. Multi-stakeholder synergy index

$$Sy = \sqrt[n]{P_{\text{gov}} \cdot P_{\text{design}} \cdot P_{\text{market}} \cdot P_{\text{public}}} \quad (6)$$

In urban public architecture, regional cultural integration is often manifested through architectural forms, symbolic elements, and the creation of spatial ambience. Museums, cultural centers, and exhibition halls frequently draw inspiration from local historical symbols or cultural motifs, undergoing modern abstraction and redesign to form urban landmarks with distinct regional identity. Public building spaces also serve functions of cultural dissemination and civic interaction. Their presentation of cultural intent not only elevates the city's overall image but also strengthens public cultural identity.

In residential architecture, regional culture is more frequently embodied through the reconstruction of lifestyles and spatial patterns. The spatial wisdom inherent in traditional dwellings—such as courtyard layouts, ventilation and lighting methods, and the spatial dimensions for neighborhood interaction—can provide inspiration for modern residential design after contemporary adaptation. In high-density urban settings, introducing shared courtyards or semi-open corridors not only perpetuates the spatial characteristics of local social relationships but also fosters a pleasant living atmosphere. Through the integration of materials, colors, and detailed design, residential architecture can both meet modern functional demands and evoke cultural memories and a sense of belonging.

In landscape and public space design, expressions of regional culture become even more diverse. By drawing on traditional garden spatial organization, utilizing local plant materials, and recreating regional landscapes and aesthetics, these spaces become not only vital venues for daily leisure and social interaction but also tangible carriers of regional culture. Urban plazas enhance cultural immersion through recreating traditional festival spaces; Waterfront landscapes weave historical symbols with natural elements to construct public spaces rich in cultural narrative. These approaches materialize and contextualize regional culture within contemporary urban settings, seamlessly integrating it into everyday experiences.

## 8. Conclusion

As a vital foundation for architectural design, the integration of regional culture into modern architecture concerns not only formal aesthetic innovation but also the continuity of cultural identity and social values. This paper analyzes the relationship between regional culture and modern architectural design from a theoretical perspective, highlighting both conflicts and opportunities for integration within their interaction. Building on this foundation, it proposes three innovative mechanisms: the recreation of symbols and artistic conception, the inheritance and innovation of materials and craftsmanship, and the collaborative participation of diverse stakeholders. By examining practical applications in public buildings, residential architecture, and landscape spaces, it explores multiple pathways for integrating regional culture into contemporary architectural design. The integration of regional culture effectively enhances a building's cultural distinctiveness and artistic value, fosters the unique character of urban spaces, and strengthens public belonging and identity. Future architectural design should prioritize the organic integration of culture and technology, tradition and modernity, driving the creative transformation and innovative development

of regional culture within a globalized context. This approach provides enduring momentum for constructing built environments that embody both local character and contemporary spirit.

## References

- [1] Sadafi N, Zain M F M, Jamil M. Adaptable Industrial Building System: Construction Industry Perspective[J]. Journal of Architectural Engineering, 2012, 18(2):140-147.
- [2] Sari D P, Sudirman M, Chiou Y S. Modernity in Javanese tradition: adapting vernacular design and local culture to Indonesian urban living[J]. Architectural Science Review, 2024, 67(2):16.
- [3] Zhan G, Li P, Zeng H C. Architectural Designs and Synthetic Strategies of Advanced Nanocatalysts[J]. Advanced Materials, 2018, 30(47):1802094.1-1802094.8.
- [4] Kleanthous M, Sazeides Y, Emre Özer, et al. Toward Multi-Layer Holistic Evaluation of System Designs[J]. IEEE Computer Architecture Letters, 2016, 15(1):58-61.
- [5] Woods,Eoin. Harnessing UML for Architectural Description--the Context View[J]. IEEE Software, 2014, 31(6):30-33.
- [6] Ghasempouri T, Raik J, Reinbrecht C, et al. Survey on Architectural Attacks: A Unified Classification and Attack Model[J]. ACM Computing Surveys, 2024, 56(2):32.
- [7] Self I, Broyles J, Butko D, et al. Early-stage acoustic optimization of absorptive concrete panels in buildings[J]. The Journal of the Acoustical Society of America, 2021, 150(4): 119-120.
- [8] Mehr S Y, Wilkinson S. Technical issues and energy efficient adaptive reuse of heritage listed city halls in Queensland Australia[J]. Structural Survey, 2018, 36(5):529-542.
- [9] Kat C J, Mostafavi F, Brembilla E, et al. Application of multimodal learning in daylight provision and view quality assessment of residential building layouts[J]. International Journal of Architectural Computing, 2024, 22(4):605–627.
- [10] Bhatia S, Chalup S, Ostwald M J. Wayfinding: a method for the empirical evaluation of structural saliency using 3D Isovists[J]. Architectural Science Review, 2013, 56(3):220-231.